

arab - ki - sarai gateway

This 48 Feet high gateway served as the southern entrance of the Arab Sarai - built to accommodate the Persian craftsmen involved in the building of Humayun's garden-tomb. Major portion of the Arab Sarai is today the Industrial Training Institute and is inaccessible to visitors.



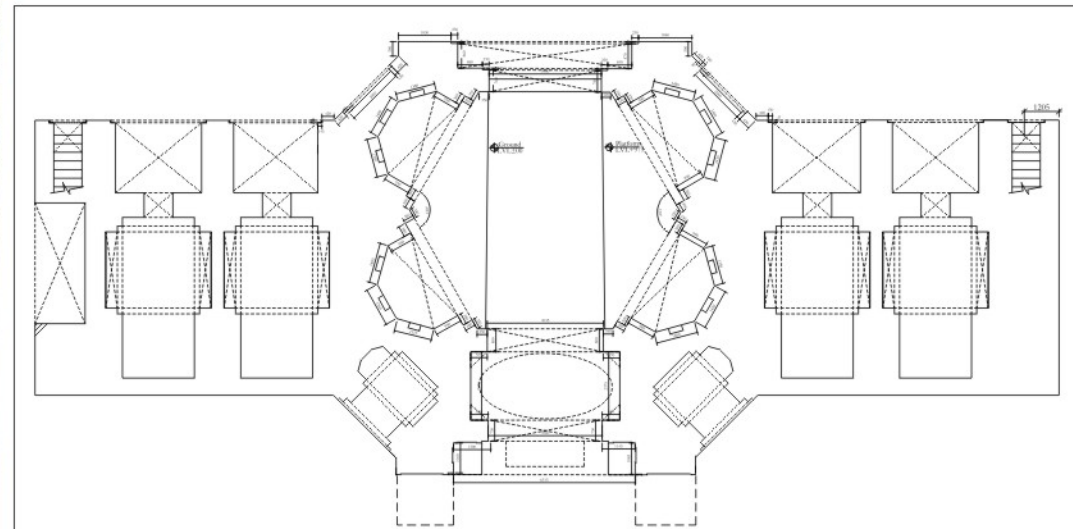
Image showing the facade of Arab ki Sarai Gateway

Over the last century the portions of this lofty gateway have collapsed including the domed entrance chamber thus severely compromising the structural stability of portions, such as the façade, that remain standing.

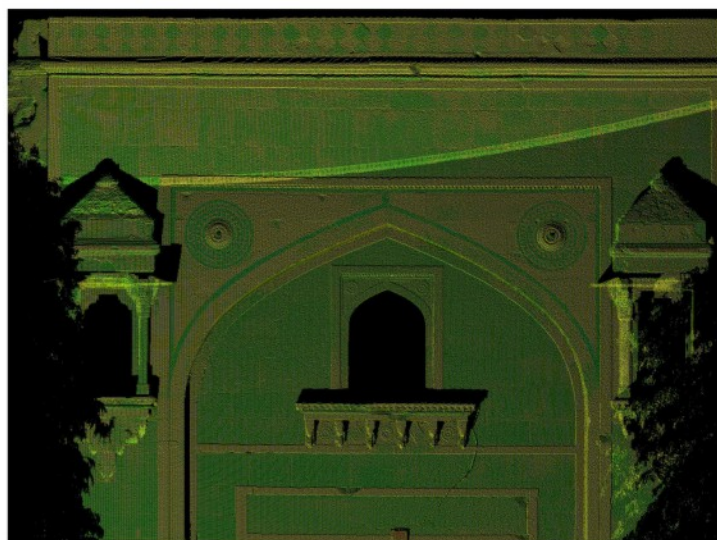
Conservation works now being undertaken on the gateway will include repairing collapsed arches and vaults, repairing the original wooden gateway, providing adequate flooring and plinth protection as well as repairs to deteriorated sandstone blocks on the façade. Inappropriate past repairs such as cement concreting on the terrace would be removed.

In keeping with the conservation policy of the Nizamuddin Urban Renewal Project (www.nizamuddinrenewal.org) master craftsmen, using traditional materials, tools and building techniques will undertake conservation works. The conservation works will also significantly enhance the historic character of the World Heritage Site

Plan of the Arab ki Sarai Gateway



Archival image of Arab ki Sarai Gateway



Point cloud data of gateway through Laser Scanning



Picture showing conservation works on the gateway

HUMAYUN'S TOMB
SUNDER NURSERY
NIZAMUDDIN BASTI

urban renewal initiative

A PUBLIC-PRIVATE PARTNERSHIP INITIATIVE OF ARCHAEOLOGICAL SURVEY OF INDIA
MUNICIPAL CORPORATION OF DELHI - CENTRAL PUBLIC WORKS DEPARTMENT
AGA KHAN FOUNDATION- AGA KHAN TRUST FOR CULTURE

PARTNER AGENCIES



ARCHAEOLOGICAL SURVEY OF INDIA



AGA KHAN TRUST FOR CULTURE

CO- FUNDED BY:



Embassy
of the Federal Republic of Germany
New Delhi