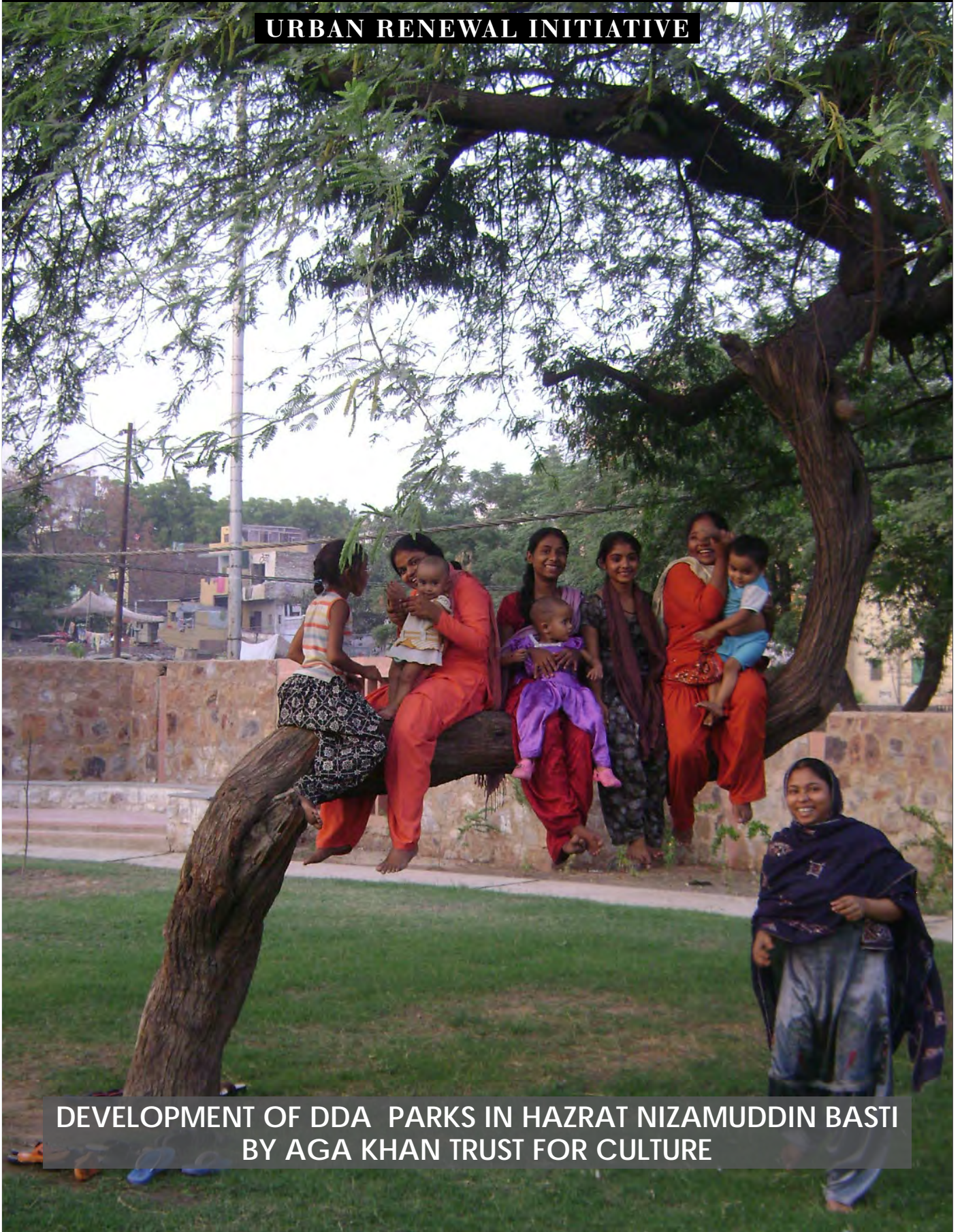


HUMAYUN'S TOMB - SUNDER NURSERY - NIZAMUDDIN BASTI

URBAN RENEWAL INITIATIVE



DEVELOPMENT OF DDA PARKS IN HAZRAT NIZAMUDDIN BASTI
BY AGA KHAN TRUST FOR CULTURE



Nizamuddin Urban Renewal Initiative

a *People Public* | Private Partnership

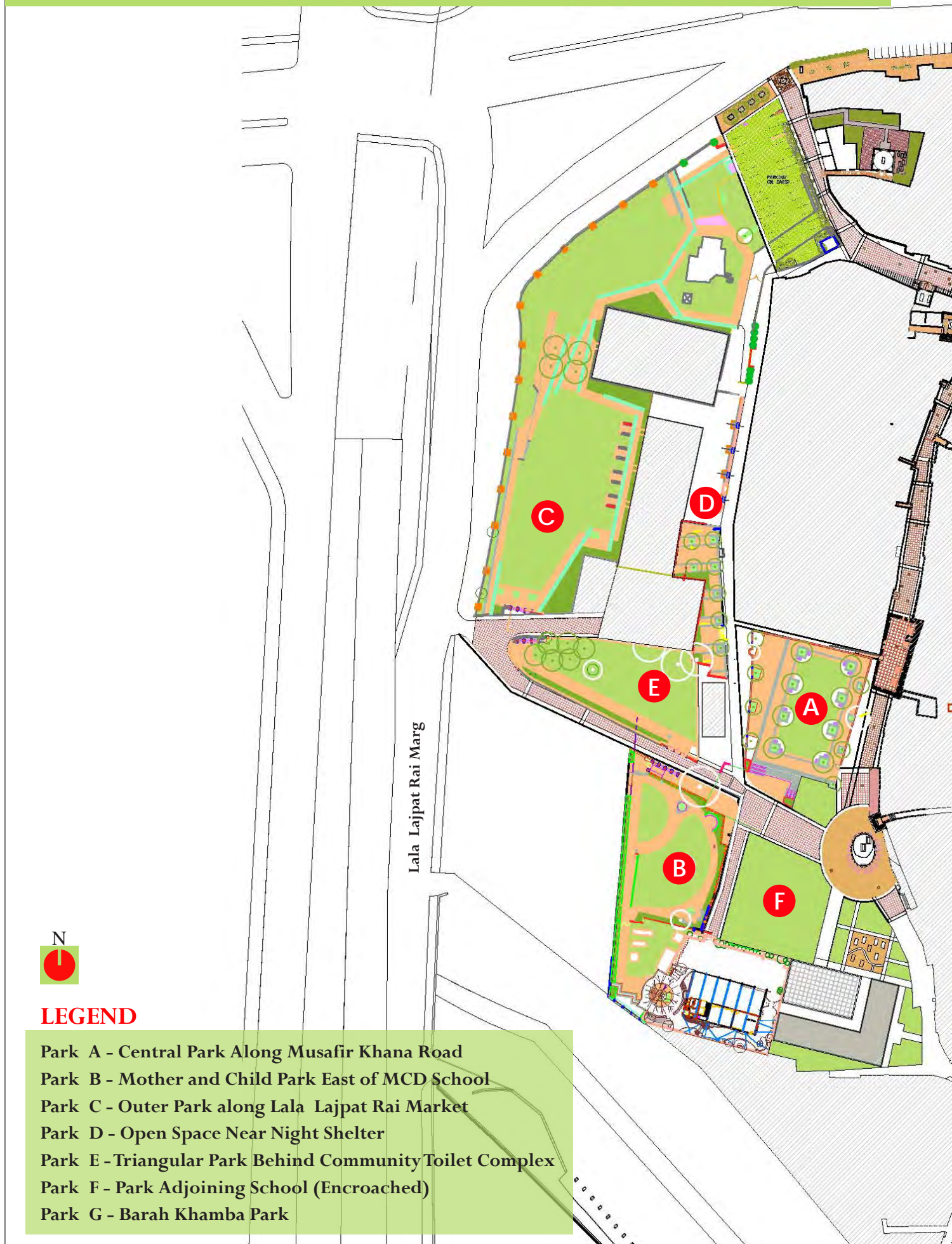
Archaeological Survey of India | South Delhi Municipal Corporation | Central Public Works Department
Aga Khan Foundation | Aga Khan Trust For Culture



CONTENTS

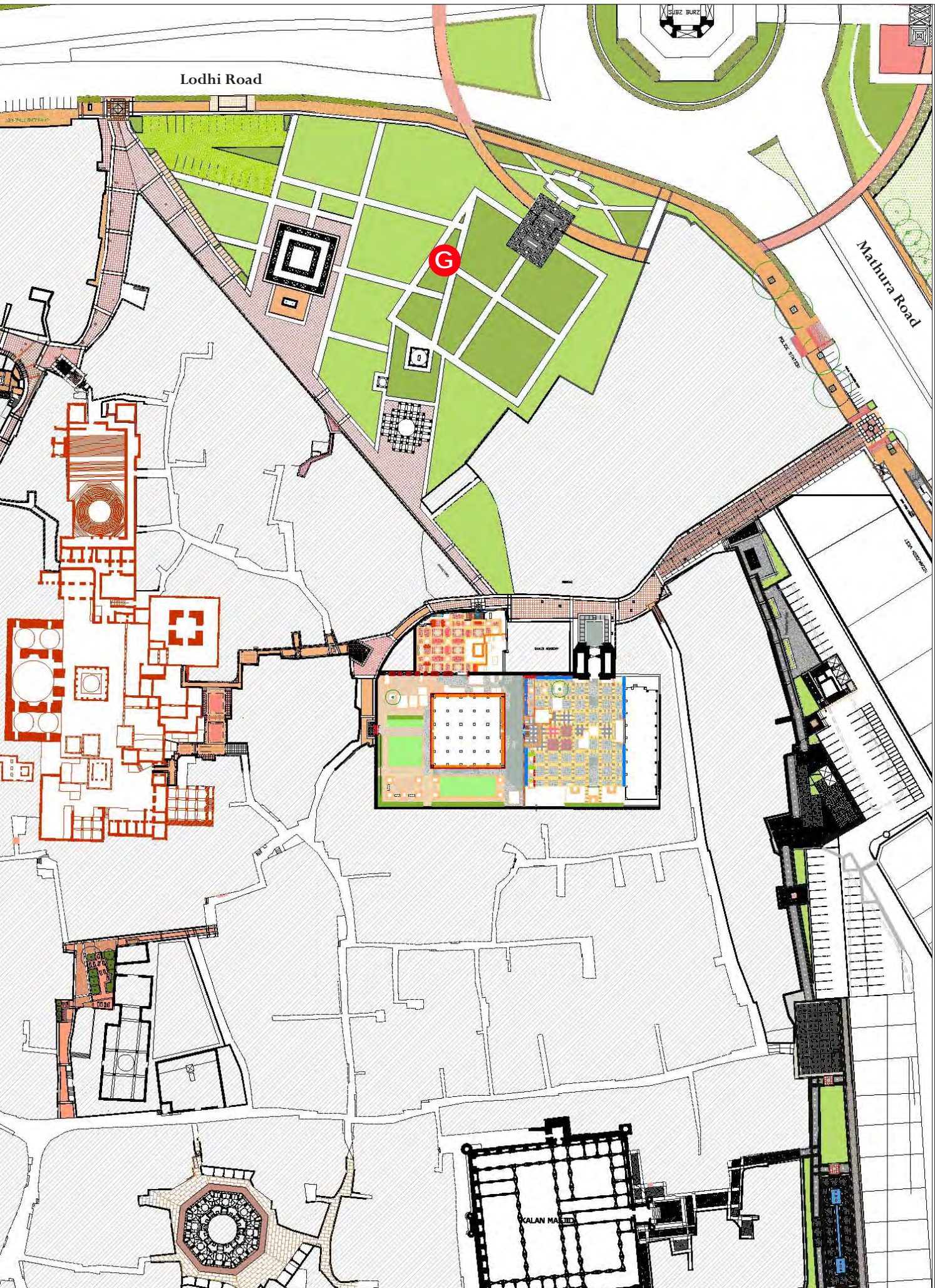
1.0	Master Plan- Parks Nizamuddin Basti	04
2.0	Community Meetings	06
3.0	Basti Parks : Central Park		
	Condition of Park	10
	During Landscaping	12
	After Completion	14
4.0	Basti Parks : Mother and Child Park		
	Condition of Park	17
	During Landscaping	20
	After Completion	22
5.0	Basti Parks : Outer Park		
	Condition of Park	30
	During Landscaping	32
	After Completion	36
6.0	Open Space Near Night Shelter		
	Condition of Park	39
	During Landscaping	42
	After Completion	44
7.0	Basti Parks : Triangular Park		
	Condition of Park	47
	After Completion	49
8.0	Basti Parks : Park Adjoining School		
	Existing Condition of Park	53
7.0	Basti Parks : Barah Khamba Park		
	Condition of Park	58
	During Landscaping	60
	After Completion	61

MASTER PLAN- PARKS NIZAMUDDIN BASTI



LEGEND

- Park A - Central Park Along Musafir Khana Road
- Park B - Mother and Child Park East of MCD School
- Park C - Outer Park along Lala Lajpat Rai Market
- Park D - Open Space Near Night Shelter
- Park E - Triangular Park Behind Community Toilet Complex
- Park F - Park Adjoining School (Encroached)
- Park G - Barah Khamba Park



Lodhi Road

Mathura Road

G

GALAN MARKET

Community Meeting



Meetings on park design

In 2009



Presentation and conceptual park design discussion with community members

In 2010



In 2010



Meeting and information board on parks

In 2010

Community Meeting



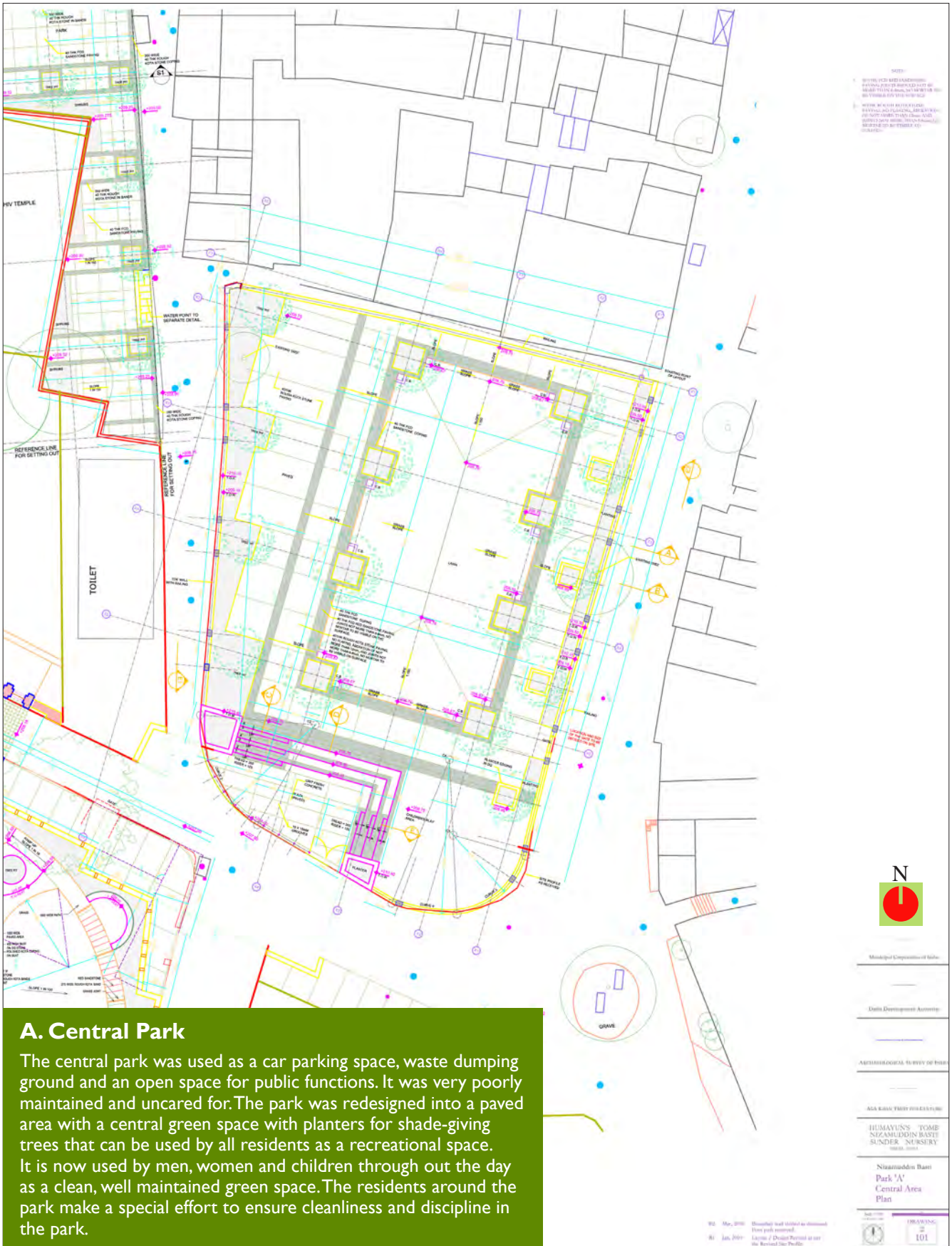
In 2010



Final design discussion with community members.

In 2010

Park- A : Central Park







In 2009



Car parking with park boundary

In 2010



Development works : Three feet deep foundation for pathways.

In 2010



Development works : Stone paving

In 2010



Park- A : Central Park





Park being used by residents

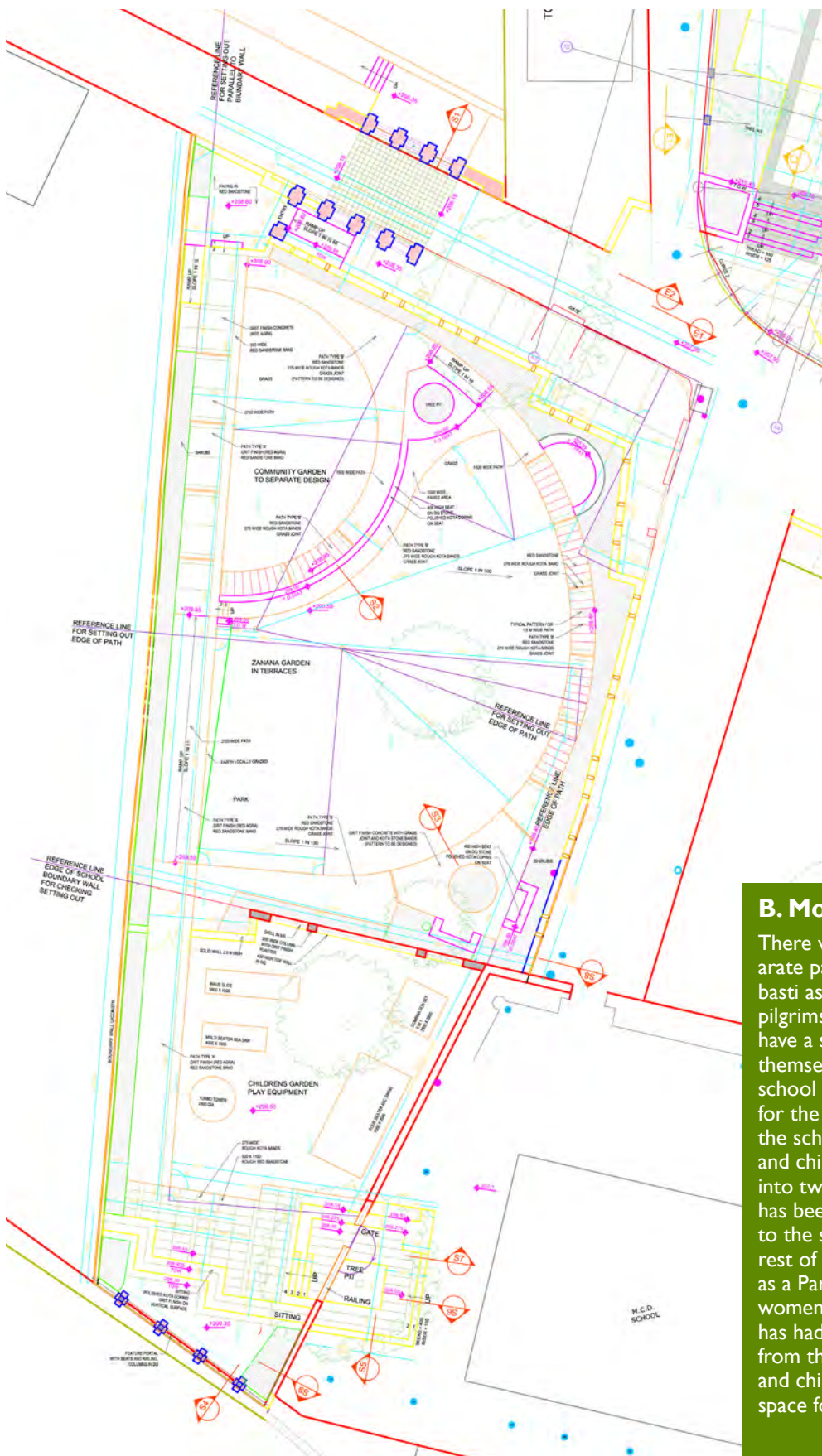
In 2011



Park being used by residents

In 2011

Park- B : Mother and Child Park



B. Mother and Child Park

There was a clear demand for a separate park for women. Women in the basti as well as millions of women pilgrims visiting the dargah did not have a safe and clean open space for themselves and their children. The school also needed a soft play area for the children. The park east of the school was designed as a mother and child park. The park is divided into two sections. Play equipment has been installed in the area close to the school for children while the rest of the park has been designed as a Parda Bagh especially for women. The mother and child park has had an overwhelming response from the community and women and children are regularly using the space for recreational purposes.



Condition of park before development

In 2009



Condition of park before development

In 2009

Park- B : Mother and Child Park



Park- B : Mother and Child Park



In 2009



Condition of park before development

In 2009



Laying of new sewer line along park boundary

In 2010



Development of pathways

In 2010



Construction of Stone Jalis along boundary wall.

In 2010



Civil works in progress.

In 2010

Park- B : Mother and Child Park





Boundary wall construction

In 2010



Plantation and greening

In 2011

Park- B : Mother and Child Park





Park being used by children

In 2011



Park being used by children

In 2011



Park being used by children

In 2011



Park being used by women and children

In 2011





Park being used by women

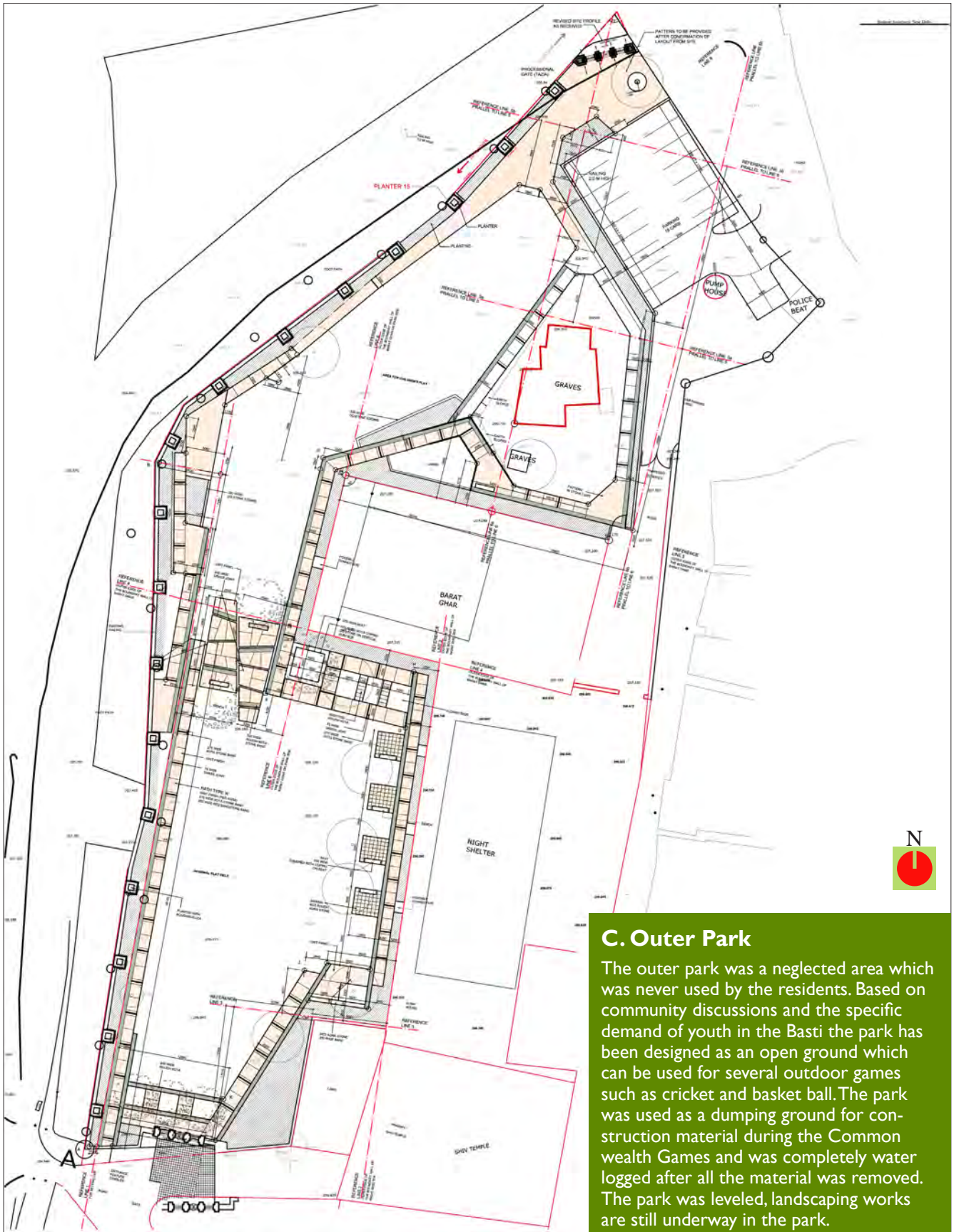
In 2011



Park being used by children

In 2011

Park- C : Outer Park



C. Outer Park

The outer park was a neglected area which was never used by the residents. Based on community discussions and the specific demand of youth in the Basti the park has been designed as an open ground which can be used for several outdoor games such as cricket and basket ball. The park was used as a dumping ground for construction material during the Commonwealth Games and was completely water logged after all the material was removed. The park was leveled, landscaping works are still underway in the park.

Park- C : Outer Park









Ongoing civil work.

In 2011



Leveling and pathway development.

In 2011



150 truck loads of good earth was used for leveling to prevent water logging

In 2011



Preparing pathways using ready-mix concrete

In 2011



Ongoing Construction of Entrance at Outer Park

In 2011



Completed Entrance of Outer Park

In 2012

Park- C : Outer Park



In 2012



Park being used by women and children

In 2012

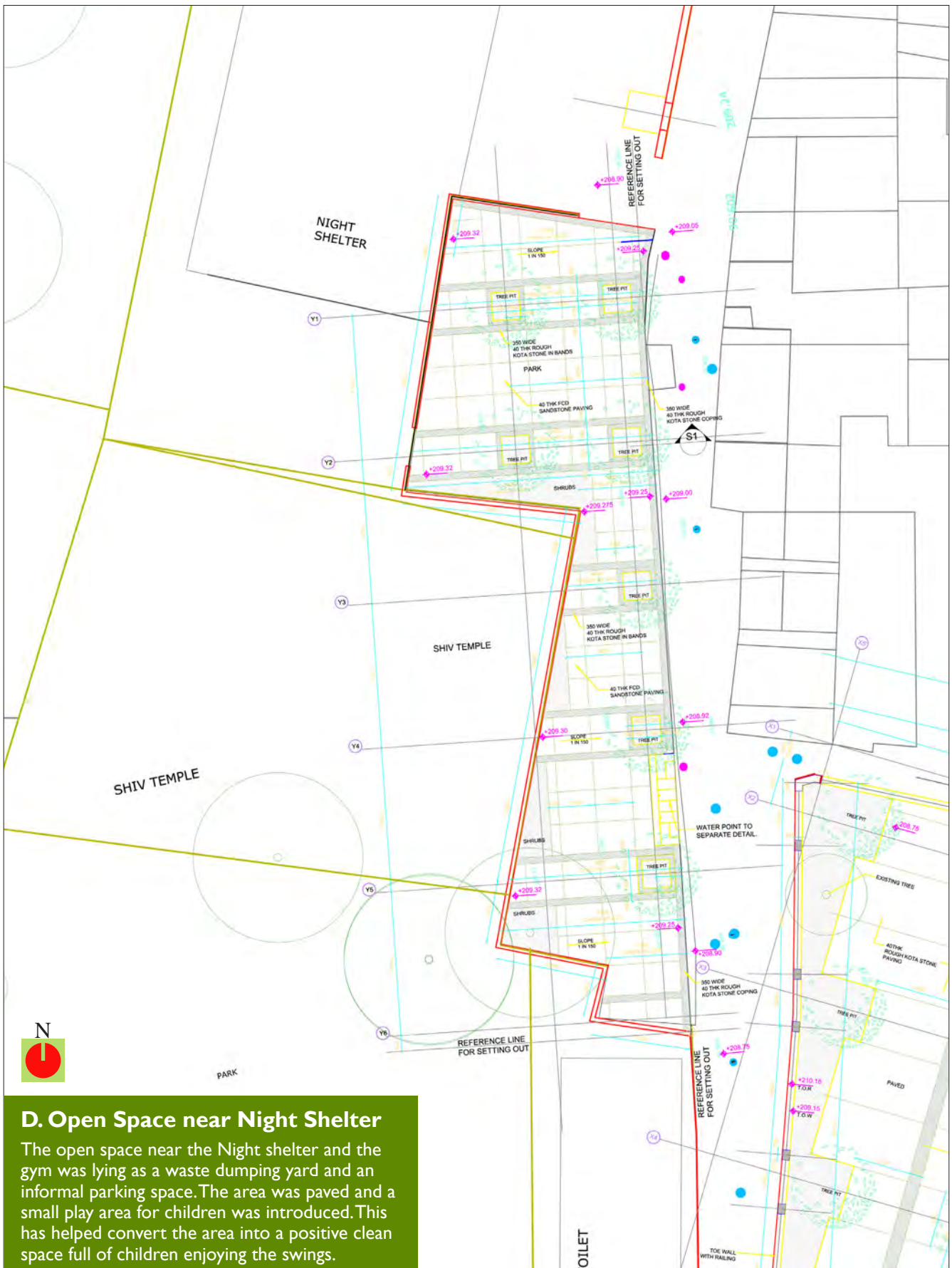




Celebrating Apni Basti Mela at Outer Park.

In 2015

Park- D : Open Space Near Night Shelter



D. Open Space near Night Shelter
 The open space near the Night shelter and the gym was lying as a waste dumping yard and an informal parking space. The area was paved and a small play area for children was introduced. This has helped convert the area into a positive clean space full of children enjoying the swings.

Park- D : Open Space Near Night Shelter



Park- D : Open Space Near Night Shelter



Park- D : Open Space Near Night Shelter



Park- D : Open Space Near Night Shelter



In 2010



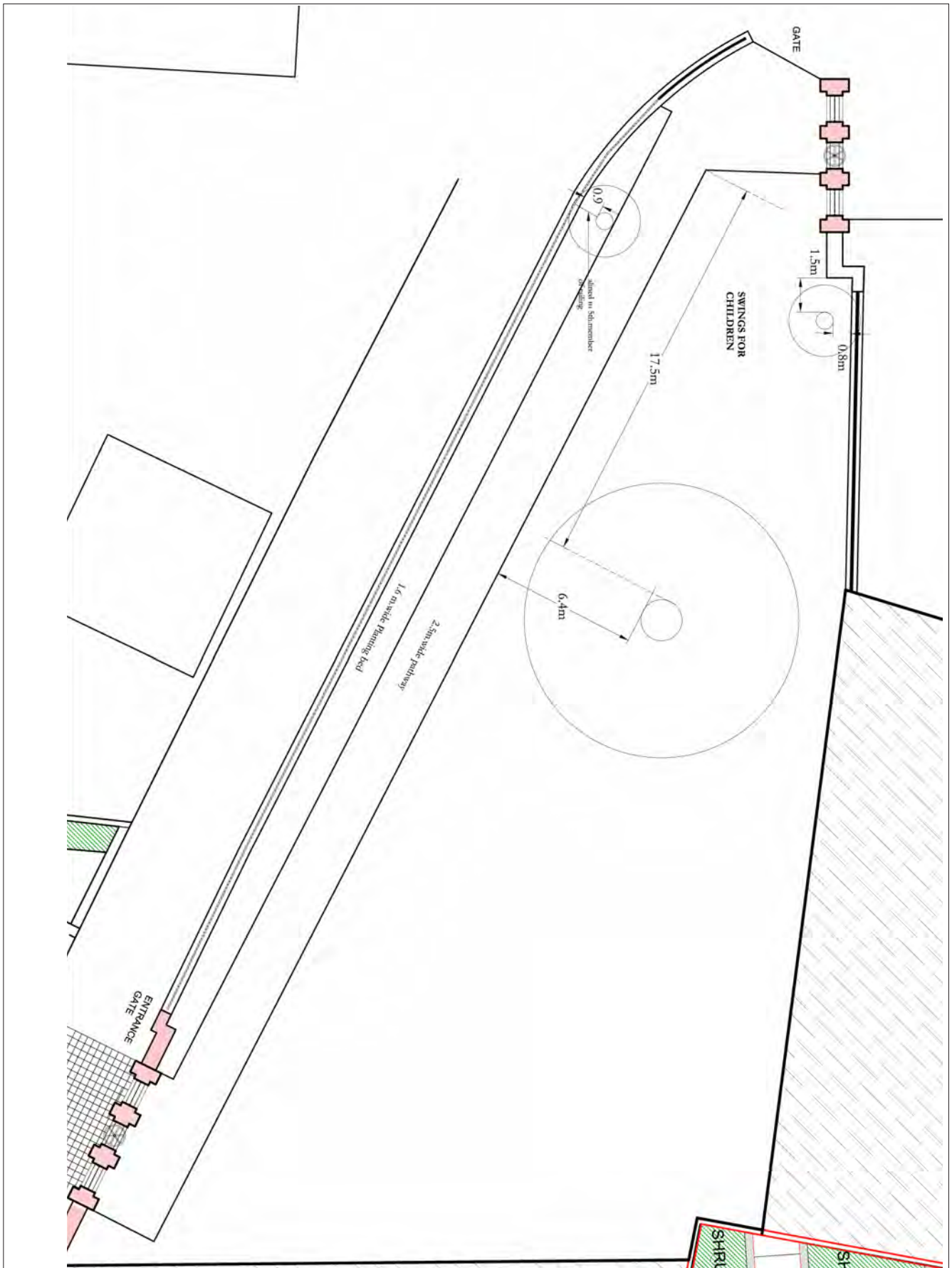
Leveling and paving works.

In 2010

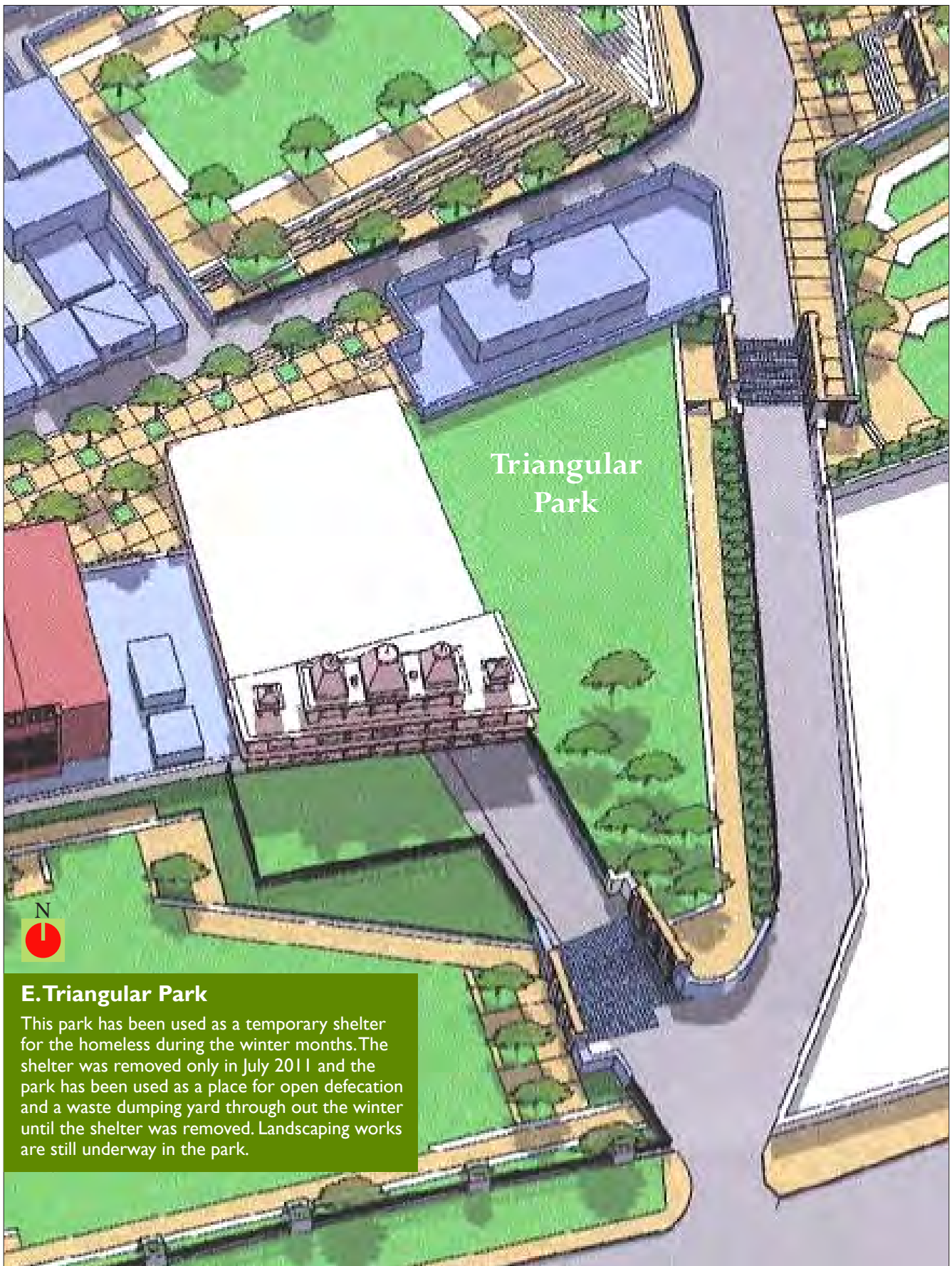
Park- D : Open Space Near Night Shelter



Park- E : Triangular Park



Park- E : Triangular Park



E. Triangular Park

This park has been used as a temporary shelter for the homeless during the winter months. The shelter was removed only in July 2011 and the park has been used as a place for open defecation and a waste dumping yard through out the winter until the shelter was removed. Landscaping works are still underway in the park.



Park- E : Triangular Park





Condition of surroundings of temporary shelter.

In 2010



Completed Landscape Works

In 2015

Park- E : Triangular Park





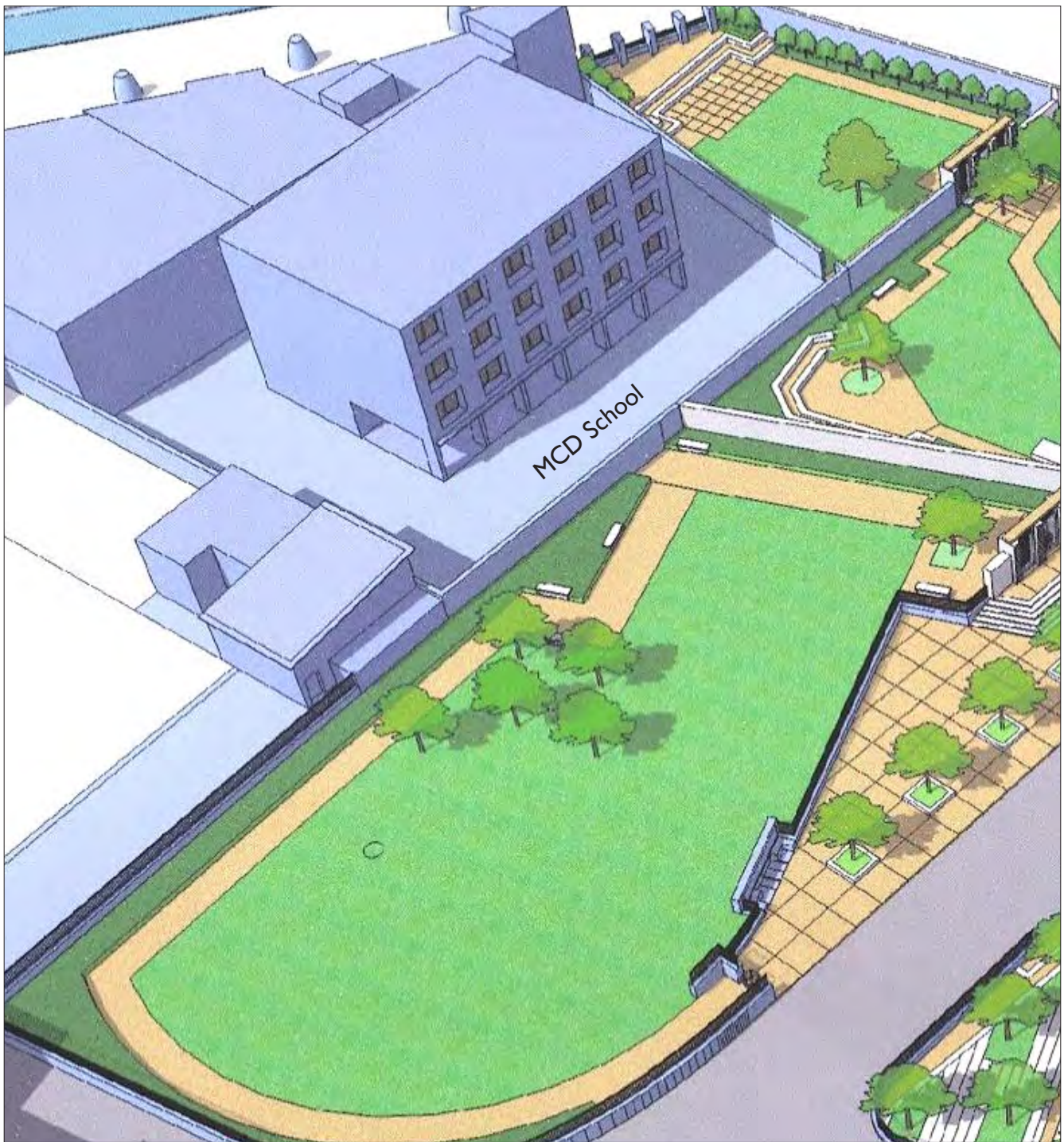
Public Seating arrangement was designed around the central tree

In 2015



In 2015

Park- F : Park Adjoining School



Proposal

F. Encroached Park

The park to the north of the school has several graves and the remains of a historic bridge However a large portion of the park is encroached due to which development works in the park have not yet commenced.



Poor up keep of park



Remain of a portion of a historic bridge inside park.



Encroachment and construction inside park



Park encroachment



Existing condition of park

Park- F : Park Adjoining School



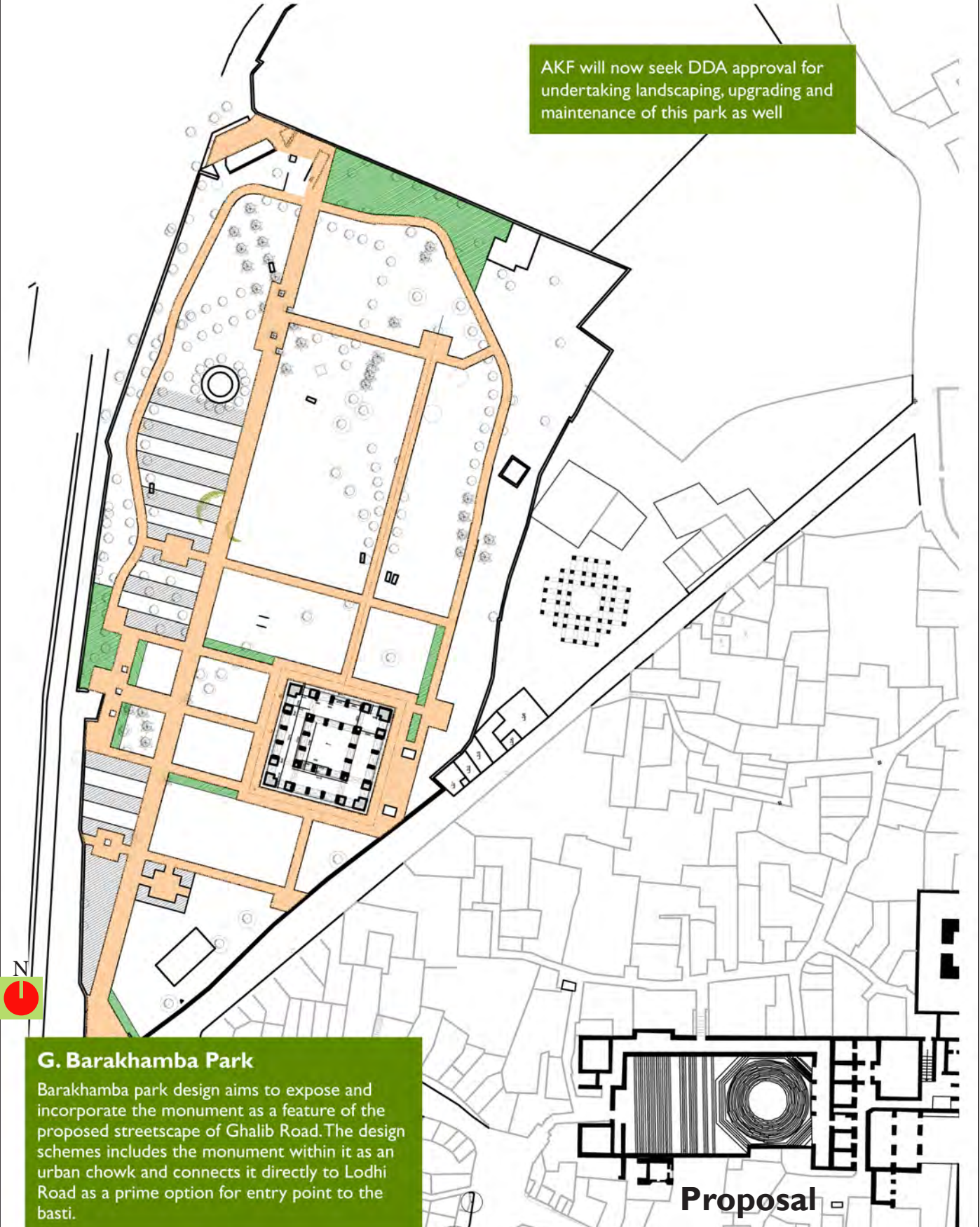
Poor condition of park.



Poor condition of play equipment in park

Park- G : Barah Khamba Park

AKF will now seek DDA approval for undertaking landscaping, upgrading and maintenance of this park as well



G. Barakhamba Park

Barakhamba park design aims to expose and incorporate the monument as a feature of the proposed streetscape of Ghalib Road. The design schemes includes the monument within it as an urban chowk and connects it directly to Lodhi Road as a prime option for entry point to the basti.

Proposal





Broken boundary wall of park

In 2011



Condition along edge of park

In 2011





Barah Khamba After Conservation and Landscape works

In 2015





In 2015



Barah Khamba After Conservation and Landscape works.

In 2015